



SPECIFICATIONS:

Wooden door spring hinge. Door closes itself by spring force. The hinge has been originally made for fire proof doors but can be used for the multiple purpose solutions when there is a need for automatically closing door.

- Product Code: 002 R and 002 L
- Material: Galvanized Steel
- Ball bearings bears a vertical weight and needle bearings provide a smooth and light running
- The door can be lifted off after the hinge installation
- The hinge can be customized according to customer requirements in terms of materials and dimensions of the hinge
- The hinge parts: bearing head (pin), the sleeve, the spring and the locking pin

APPLICATIONS

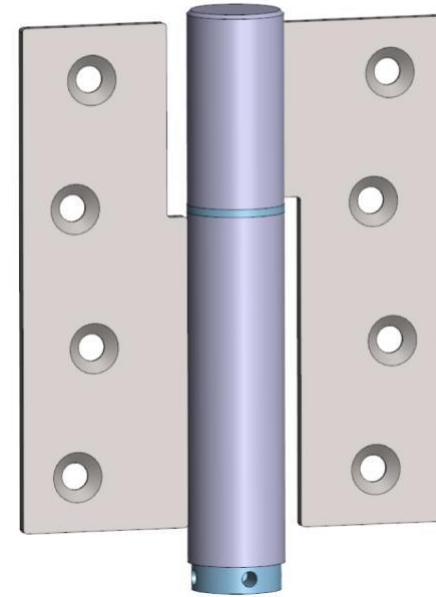
- Steel fire-proof doors.
- Heavy doors and shutters
- Heavy-duty doors and shutters
- Also suitable for horizontal mounting

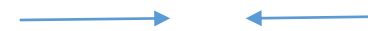
INSTALLATION INSTRUCTIONS

- Please note the hinges handedness. Handedness is determined by the door opening direction of view. The right side hinge is right handed (R) and the left side hinge is left handed (L). The spring can be changed only if the door can be lifted off.
- Position the door / gate in place. Install the upper side of the bearing head (the shorter part) to the door and the underside of the sleeve (the longer part) to the frame.
- Spring has to be adjust after the welding. Spring tightening direction is the door closing direction. Tighten the adjuster (the lower part of the hinge) one hole while door is closed using a threadlocker.
- When door opens, the spring is tightened more and thus gathers strength for the closing of the door. If the door does not close by itself, or you want more closing power, then tight one hole more.

Tampereen Erikoissarana Oy
Ahertajankatu 3
FI-33720 Tampere, Finland

Ph: +358 (0)3 317 3853
info@finnhinge.com



L R

 Josen kiristysuunta

